

# MYPRO TOUCH+

## Control Panel

Screw Compressors

**МАУЕКАША**  
**MYCOM**



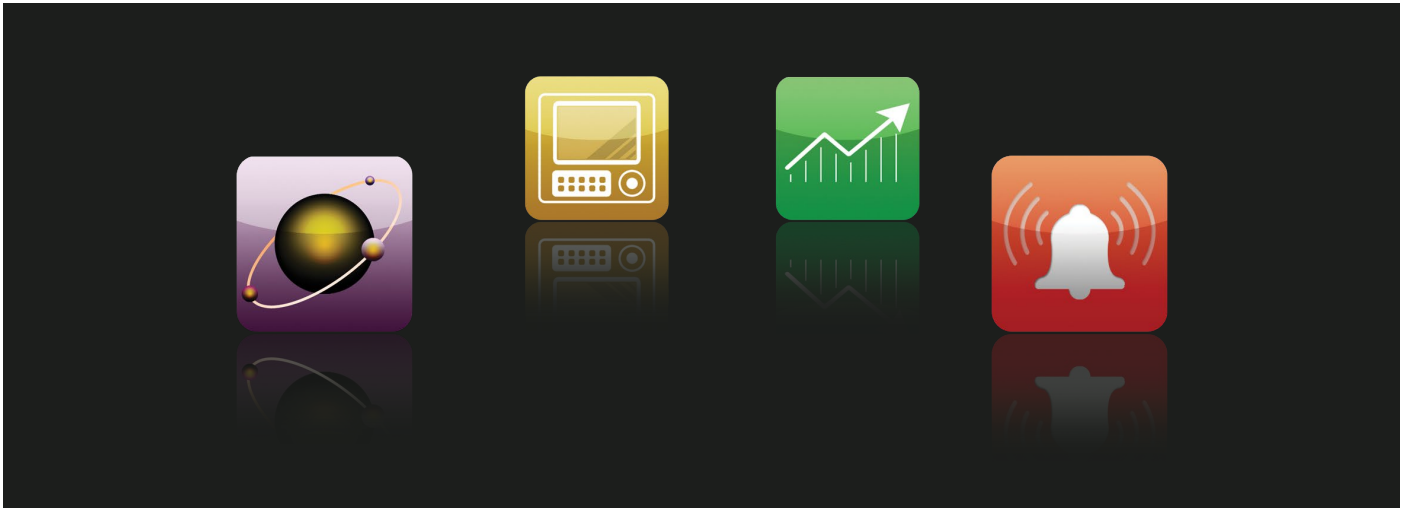
# MYPRO TOUCH+

## Control Panel

<https://mayekawa.com/americas/mna>

# MYPRO TOUCH+ Control Panel

MYCOM's screw compressor package control panel



The new generation MYCOM control panel, the MYPRO TOUCH+, is designed as an intuitive interface to MYCOM's industry leading compressors. Features such as simple icon menu interface, touch panel control and USB connection make the MYPRO TOUCH+ the easiest way to control MYCOM compressors.

The bright 13.3" widescreen touch panel is used to display precise information of the current status of the compressor in a comprehensive list form. A simple tap switches the main status screen to the graphic view with an easy-to-read gauge design layout.

The MYPRO TOUCH+ can monitor, control and display basic system equipment such as compressor vibration sensors, vessel level or chillers.

In addition to the new touch panel screens, the MYPRO TOUCH+ also allows the operator to display operating instruction manuals, data sheets and drawings in PDF format plus instructional videos.

## FEATURES

- USB connection
- Ethernet connectivity
- Modbus RTU protocol
- Modbus TCP/IP protocol
- Ethernet IP protocol for Allen Bradley
- Password protection
- SD card storage
- Main status screen configurable
- SSR I/O switch type
- Real time and historical trending
- Sensor calibration
- Class 1, Division 2 optional
- Icon menu screen
- Compatible with MYPRO CP-IV

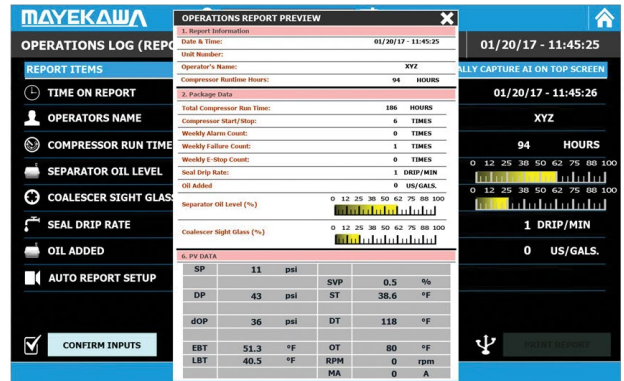
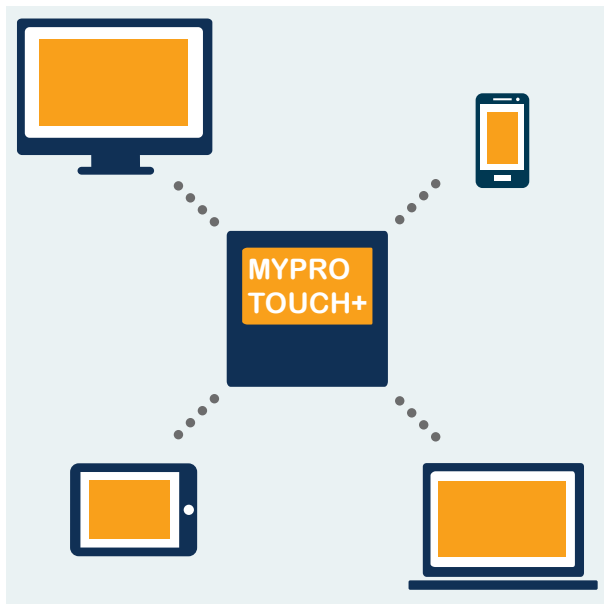
## OTHER FEATURES

Alarm event based e-mail notification with live data. E-mail alarm event with compressor data recorded at the time of the event allows operator to diagnose the situation and capture data immediately. Other features include:

- Supports major industrial communication protocols
- Integrated web help
- Supports VNC technology for remote desktop
- Remote monitoring and control. Client-Server functionality. Mobile clients supported.

## REMOTE CONNECTIONS AND CONTROLS:

Your HMI Everywhere!



The MYPRO TOUCH+ also offers options to remotely monitor the HMI from a smart phone or tablet. Combine this feature with a VPN access to your network and you can have 24/7/365 access to your MYPRO TOUCH+. Simply download a VNC viewer app to your smart device and connect to the IP address of your MYPRO TOUCH+ panel in your network.

In addition to the remote access capabilities, MYCOM also offers optional Ethernet drivers aside from the standard Modbus RTU protocol included in the panel. Use these drivers to expand your communications capabilities and connect to AB CompactLogix and MicroLogix through Ethernet IP or use the universal Ethernet TCP/IP protocol to communicate with your external devices.

## SPECIFICATIONS

Screen Size	13.3" Diagonal	Display Resolution	1280 x 800
Communication	RS-485 Ethernet (2) USB (2)	Control Voltage	100V~120V / 220V~240V
		Electrical Frequency	50 / 60 Hz
		Ambient Temperature	32F~122F (0C~50C) 85% R.H.
Memory Storage	SD Card (32GB max.)	Dimensions	H30" x W24" x D10" H762mm x W610mm x D254mm
Analog Input		Digital I/O	
Current	4-20 mA DC	Digital Input	Do NOT apply voltage to connection. Board supplies internal 12 VDC Max. 25 mA
Voltage	1-5 VDC		
Potentiometer	1-1000 ohm; Qty. 2		
Analog Output		Digital Output - Solid State Relay Ratings	100-240 VAC, 2A Leakage Current < 1.5 mA
QTY	4		
Current Signal	4-20 mA DC Load resistance < 500 ohm		

**MAYEKAWA USA, INC.**  
<https://mayekawa.com/americas/mna>

**Tel:** +1 (615) 773-2859  
**24 Hr Service:** +1 (800) 836-9266  
**Email:** [info@mayekawausa.com](mailto:info@mayekawausa.com)

**MAYEKAWA CANADA, INC.**  
<https://mayekawa.com/americas/mna>

**Vancouver:** +1 (604) 270-1544  
**Calgary:** +1 (403) 250-1554  
**Toronto:** +1 (905) 564-0664